

Jubilee Park Development Programme (JPDP)

Programme Mandate

Programme Name	Jubilee Park Development Programme (JPDP)				
SRO					
Programme Manager					
Date	29/10/15	Version	0.1	Status	Approved by Bruton Town Council (BTC) on 27/10/15
Date		Version		Status	
Date		Version		Status	

Purpose:

This Programme Mandate provides the strategic trigger to enable initial scoping work on the Jubilee Park Development Programme (JPDP) to begin. Its content has been derived from the strategic direction laid out in the Bruton Community Partnership (BCP) Action Plan¹. It sets out the direction and scope of the programme and is the authoritative source document from which all wider stakeholder briefing and communication messages should be derived. It is the first of many artefacts at the start of a long transformational journey as illustrated in the High Level Activity Flow at diagram 1.

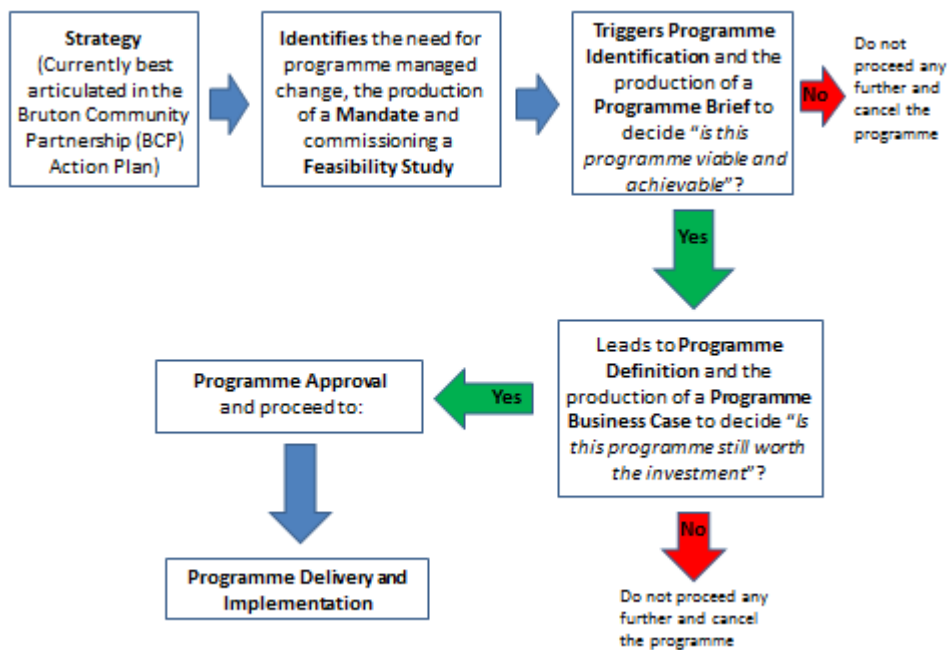


Diagram 1 – Jubilee Park Development Programme High Level Activity Flow

1. Bruton Vision Statement²

We are working towards a Bruton that is a thriving town, proud of its heritage yet welcoming change, and is a confident, cultured and united community for all its people.

¹ BCP Action Plan dated October 2014.

² Developed by Bruton The Way Forward after wide consultation throughout 2005 and published in the 2006 Action Plan. This vision was formally endorsed and adopted by Bruton Town Council at a meeting held on 31 October 2006. It was reviewed by the Bruton Community Partnership (BCP) and formally adopted in the October 2014 BCP Action Plan.

Jubilee Park Development Programme (JPDP)

Programme Mandate

2. Outline JPDP Vision Statement

The JPDP will provide modern and innovative sports and leisure facilities to inspire the people of Bruton and the surrounding villages to be active, healthy and to enjoy life.

3. Drivers for Change

There are 3 principal inter-related drivers for change all of which are evidenced in the BCP Action Plan, the Bruton United Football Club (BUFC) Outline Proposal for a New Pavilion³ and the Bru Bowl Proposal for a New Skate Park⁴:

- The capacity of the Jubilee Park (JP) sporting and leisure facilities is insufficient to meet the current demand.
- Demand for JP facilities is forecast to increase due to:
 - Population growth.
 - Increased visitor numbers due to the growing popularity of Bruton as a destination town in its own right.
- The quality of the current JP facilities is insufficiently modern and innovative for the requirements of a thriving 21st century town.

4. Outcomes

The table below lists the outcomes that it is envisaged will be achieved by the JPDP. Each outcome is cross referenced to a BCP Objective and will be used to develop a fully populated Benefits Map.

No	Outcome	BCP Objective Reference
1	Increased sport and leisure opportunities	4c
2	Increased activities for young people	4d
3	Improved sport and leisure facilities for the disabled	4c
4	Improved access to healthy lifestyle services	4a
5	Safer communities	3a
6	Improved partnership working	3b
7	Increased employment opportunities	2b
8	Promotion of Bruton as an attractive and welcoming town to visit	1a

³ BUFC Outline Proposal for a New Pavilion dated 18 August 2015.

⁴ Bru Bowl presentation to BTC dated 26 May 2015.

Jubilee Park Development Programme (JPDP)

Programme Mandate

5. Risks and issues

Jubilee Park is owned by Hugh Sexey's Hospital, a charity with the following objectives:

- The provision of housing accommodation for elderly people (the "residents") who are in need, hardship or distress.
- Charitable purposes for the benefit of the residents as the Visitors (Trustees) decide.
- Other charitable purposes as the Visitors decide.

Jubilee Park is leased to BTC. A 25 year lease was signed in 2006 and expires in 2031 and therefore the viability of the JPDP is dependent on early confirmation that Jubilee Park will be available to BTC post 2031.

6. Estimated cost, effort and timescales

Initial costing has not yet been done but costs, effort and timescales will be a key output of the Feasibility and Public Consultation Study which is planned (dependent on funding) to take place in 2016/17.

For initial planning purposes an indicative total programme cost of £1.5m is assumed. Best practice would support spending 1% of the total cost on conducting a Feasibility and Public Consultation Study and so £15,000.00 has been submitted to BTC as part of the ongoing 2016/17 BTC precept and budgeting process.

7. Projects

At this stage, it is envisaged that the JPDP will consist of the following projects:

- The New Pavilion Project.
- The Skate Park (known as the "Bru Bowl") upgrade Project.
- The Multi Utility Games Area (MUGA) Project.
- The Lower Pitch Upgrade Project.
- The Upper Pitch Upgrade Project. This Project has already delivered its output and has closed, but is included within the JPDP as it will continue to contribute to realising the outcomes and benefits listed at para 3.

The JPDP organisational framework will enable additional projects to be included if they contribute to the outcomes and benefits listed at para 3. Examples include potentially expanding the current area of JP by acquiring the field to the south of the road that runs parallel to the upper pitch, and restoring the Abbey Fishponds in the Abbey Park.

Jubilee Park Development Programme (JPDP)

Programme Mandate

8. Stakeholders

The JPDP will have a wide, varied and diverse stakeholder community and a detailed stakeholder map will be developed as part of the Feasibility and Public Consultation Study. Pre-Feasibility Study the key stakeholders to be engaged initially are:

- The Visitors of Hugh Sexey's Hospital.
- The members of the Bruton Community Partnership – this is the most efficient method of engaging quickly with Bruton's clubs, societies and organisations.
- South Somerset District Council.
- Bruton Town Council.
- The Jubilee Park Pavilion Trust.

9. Governance

The control framework through which the JPDP will deliver the outcomes and benefits listed at para 3 will be a key output of the Feasibility and Public Consultation Study.